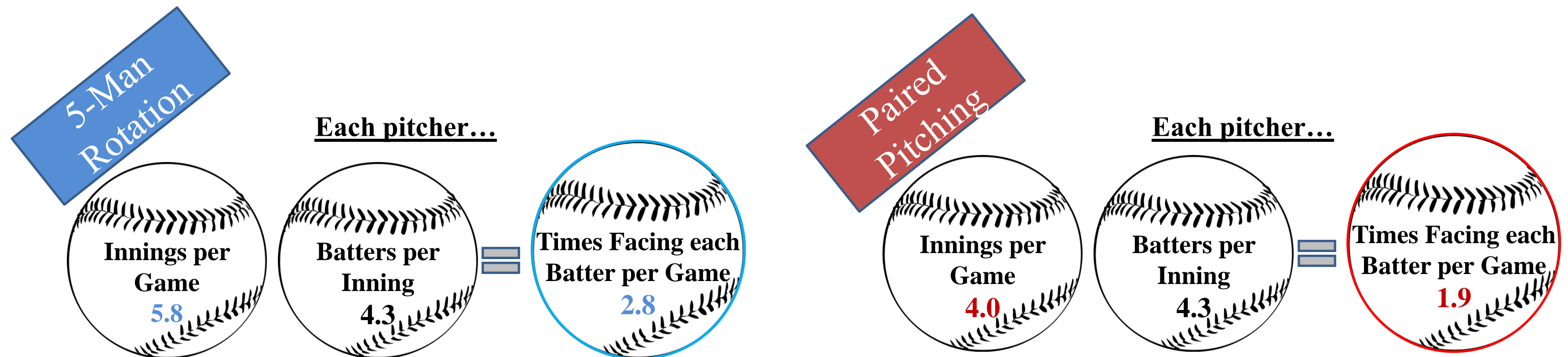




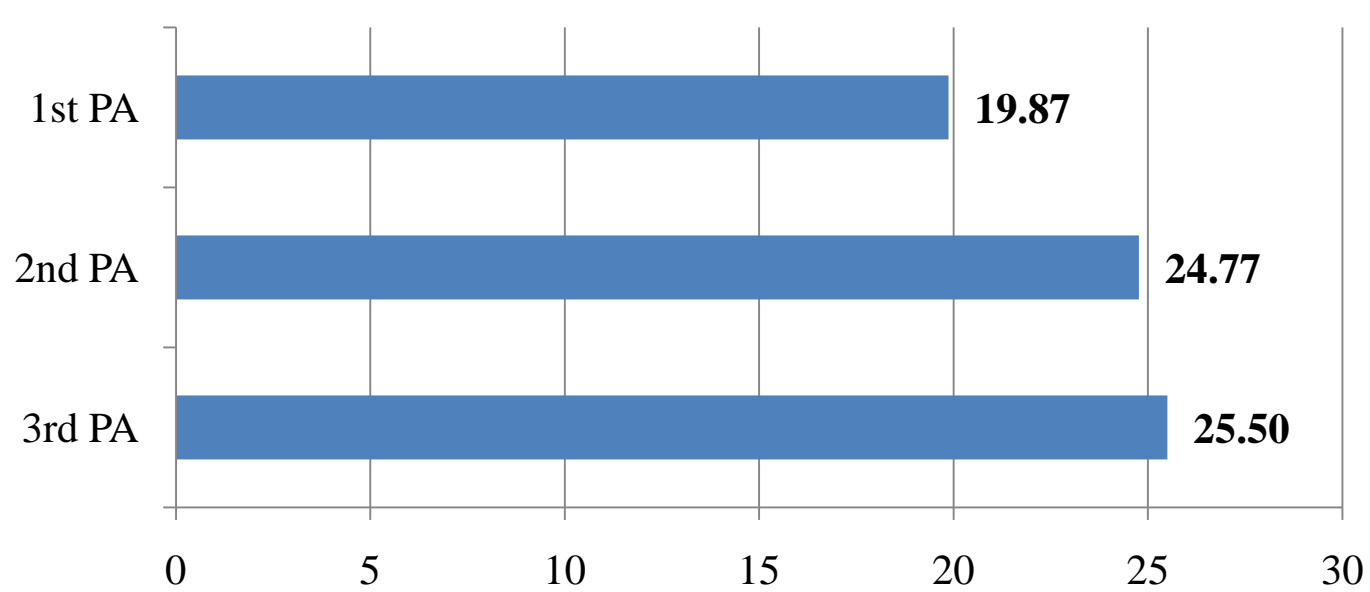
Paired Pitching: The Welcomed Death of the Starting Pitcher

Greg Rubin, MBAc 2011 - NYU Stern School of Business - gjr250@stern.nyu.edu

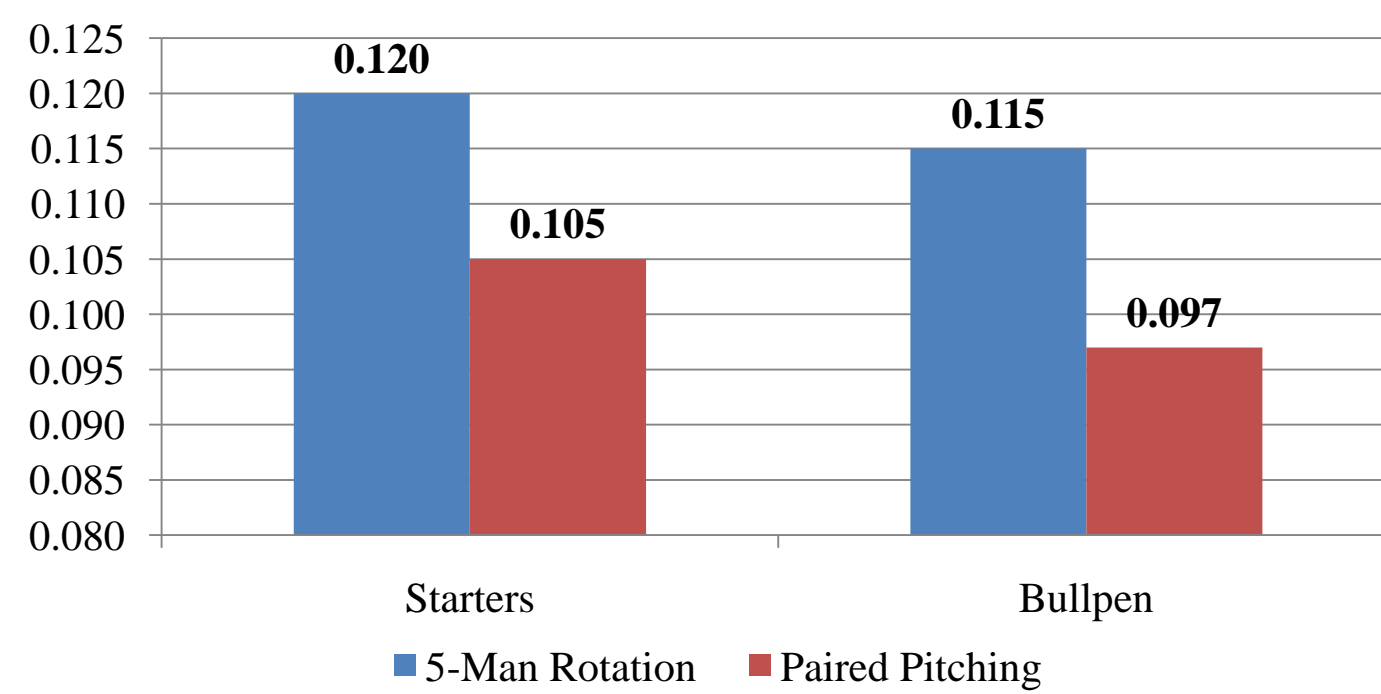
The Idea – A pair of 4 inning pitchers is better than 1 ace starter



Runs Allowed (RA) given Least Squares Mean of Batters Faced



Runs Allowed (RA) per Plate Appearance



Batters improve with each plate appearance in a game against a pitcher

96 fewer runs

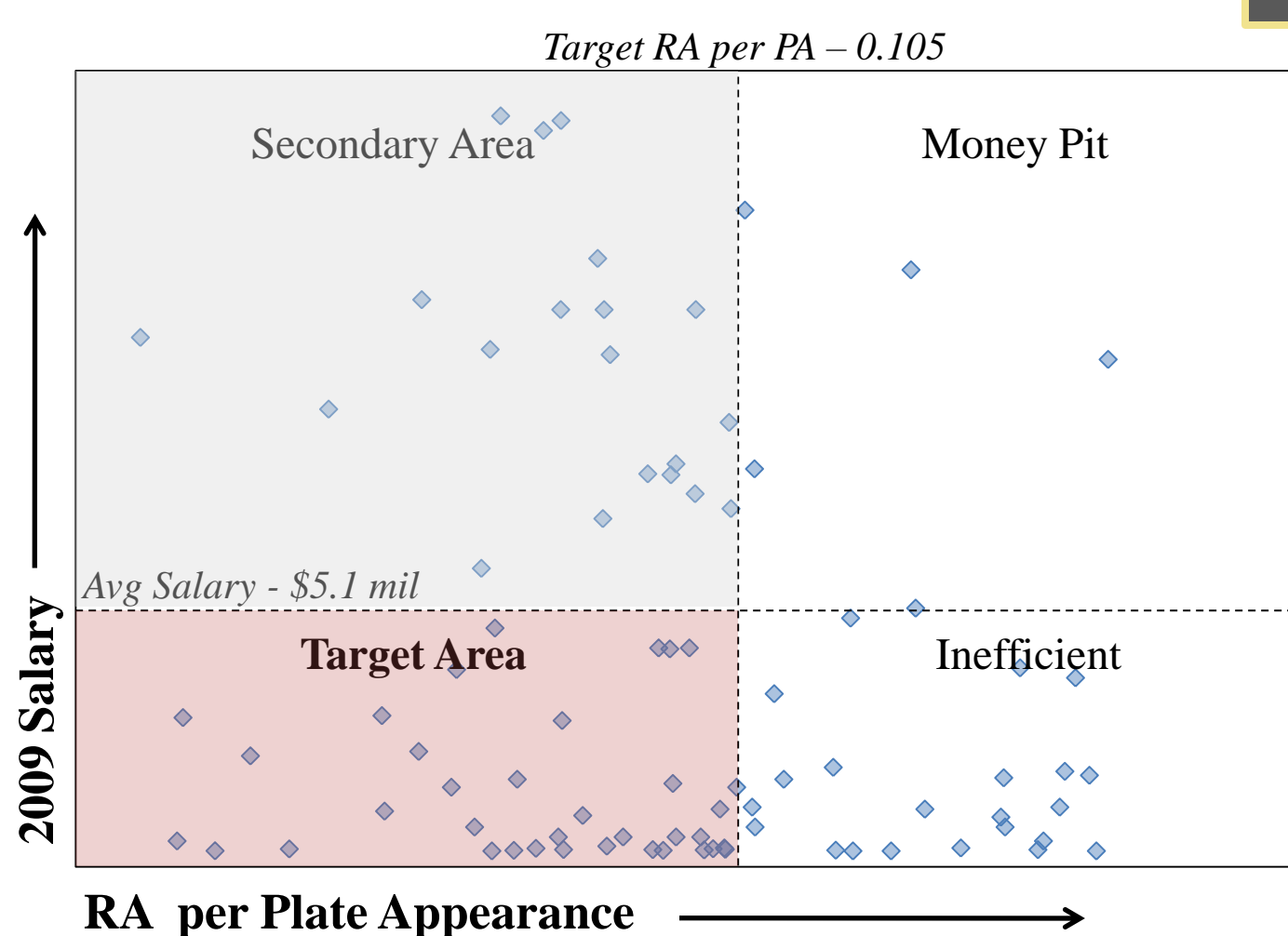
Paired Pitchers throw exactly 4 innings – rotational pitchers average 5.8 – inefficiency is reduced

Starters leave 3.1 IP to bullpen

	Paired Pitchers	Bullpen	Team Total
Runs Allowed (RA) per PA	0.105	0.097	0.104
Expected PA per IP	4.31	4.35	4.32
Average Innings per Season	1,296	152	1,448
Expected RA per Season	587	64	651
2009 Actual Average RA			747
Expected Difference in Runs Allowed			-96

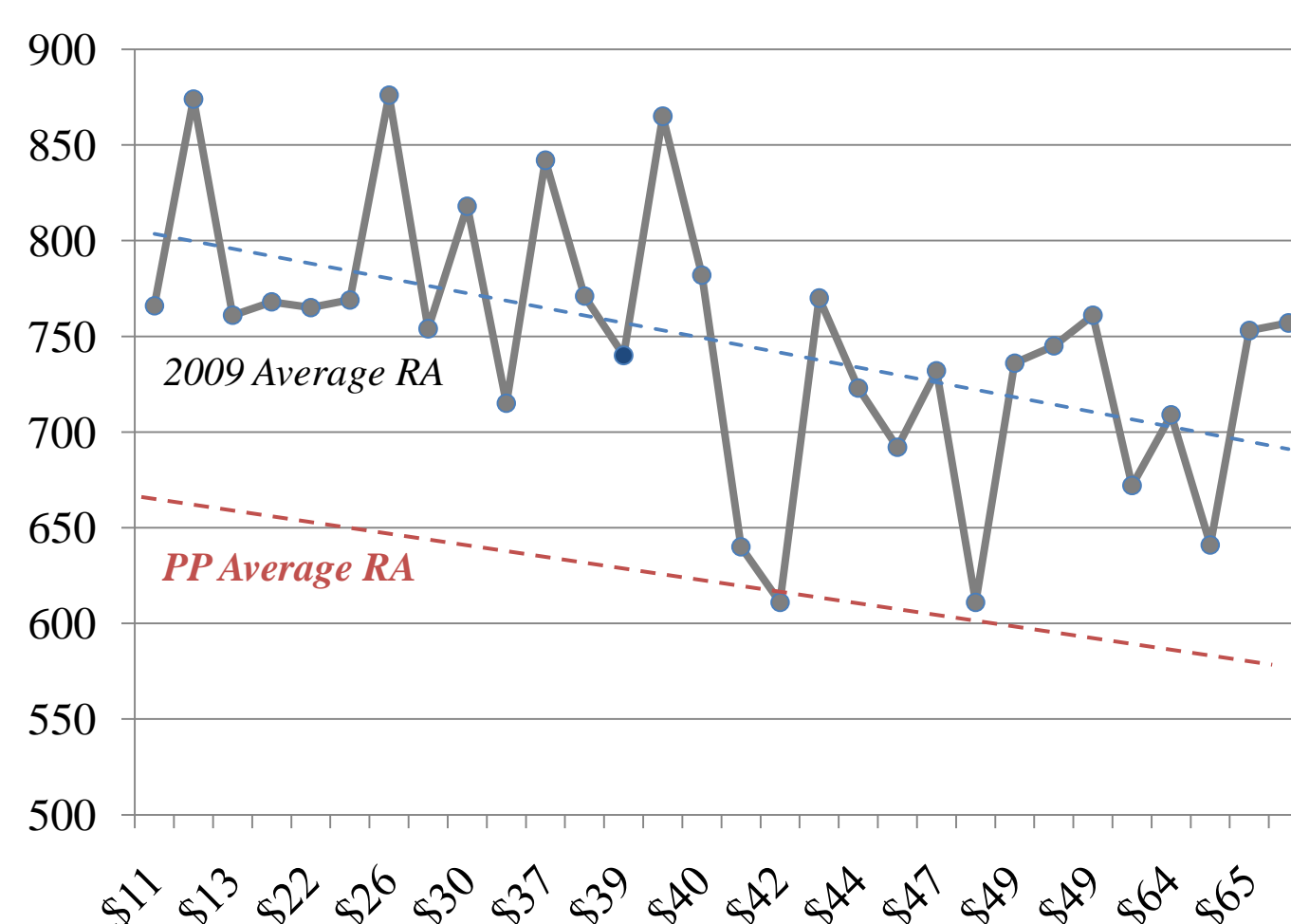
PPs leave 0.9 IP to bullpen

2009 Salaries and RA per PA for Innings 1 thru 4



Average PP Staff \$11 mil

2009 Runs Allowed as a Function of Pitching Payroll (in \$mil)



Runs Allowed

Runs Allowed

Payroll Savings

Payroll Savings